



ENERGY PROCESS EQUIPMENTS

Works & Office : Plot : No.29 G.I.D.C. N.H. No. 8, POR-Ramangamdi, Ta.Dist: Vadodara-391243. (Guj)
Ph.No.: (0265) 2830375, 2830975, 2831475, 2831414 Tele Fax No.: (0265) 2830975, (R) (0265) 2845051
E-mail : info@energy-boilers.com,energyboiler@satyam.net.in
Visit us : www.energy-boilers.com

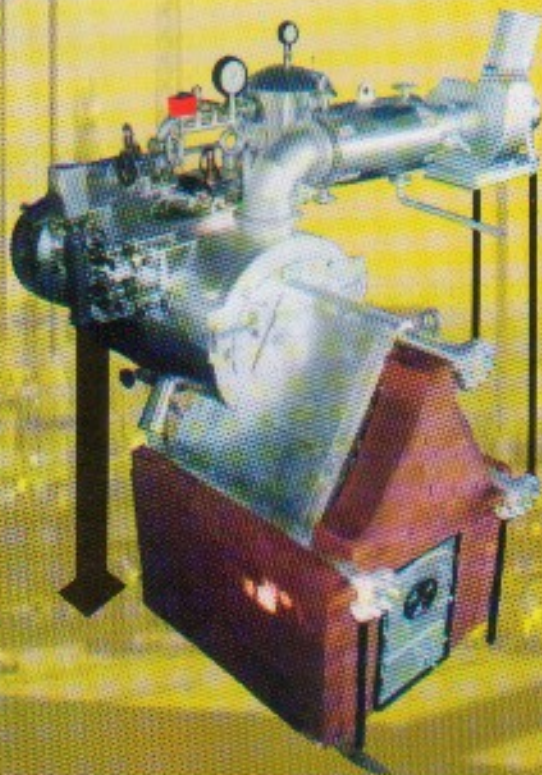
IBR APPROVED MANUFACTURER

**PROVEN, SAFE, ECONOMICAL, ENERGY SAVER,
HORIZONTAL SMALL INDUSTRIAL STEAM BOILER
(SIB) AS PER IBR ACT.**

SMALL INDUSTRIAL STEAM BOILER (SIB)



**TO COMPLY WITH
"INDIAN BOILER REGULATION"**



- ⇒ HIGH OPERATING SAFETIES
- ⇒ REDUCE EASY MAINTENANCE
- ⇒ EASY INSTALLATION
- ⇒ EASY TO CLEAN
- ⇒ LOW BUDGET EQUIPMENTS
- ⇒ FULLY AUTOMATIC CONTROLS FOR PRESSURE & WATER LEVEL.
- ⇒ DESIGN AS PER IBR REGULATION CHAPTER. XIV
- ⇒ NOT REQUIRE IBR BOILER OPERATOR



ENERGY PROCESS EQUIPMENTS

Works & Office : Plot : No.29 G.I.D.C. N.H. No. 8, POR-Ramangamdi, Ta.Dist: Vadodara-391243. (Guj)
 Ph.No.: (0265) 2830375, 2830975, 2831475, 2831414 Tele Fax No.: (0265) 2830975, (R) (0265) 2645051
 E-mail : info@energy-boilers.com,energyboiler@satyam.net.in
 Visit us : www.energy-boilers.com

DEFINATION OF SMALL INDUSTRIAL BOILER (SIB)

A shell type boiler generating steam for use external to itself under pressure up to 7 Kg/Cm² and having a capacity exceeding 22.75 litres, but not exceeding 500 litres including the volumetric capacity. of all pressure parts being heated from the same heating source and connected to the boiler, or

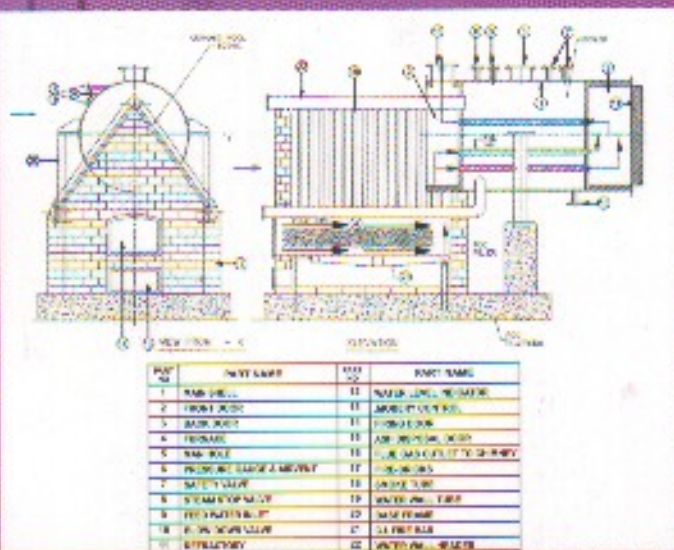
A coil type boiler or a once through boiler or a water tube boiler having the conditions specified in above except that:-

- i) the limitation of pressure 12 Kg/cm² , and
- ii) the capacity not exceeding 150 Litres.

INSPECTION AND TESTING

The Small Industrial Boilers is subject to inspection during construction and after completion by Boiler inspecting Authority. Inspection of SIB Boiler is following stages:

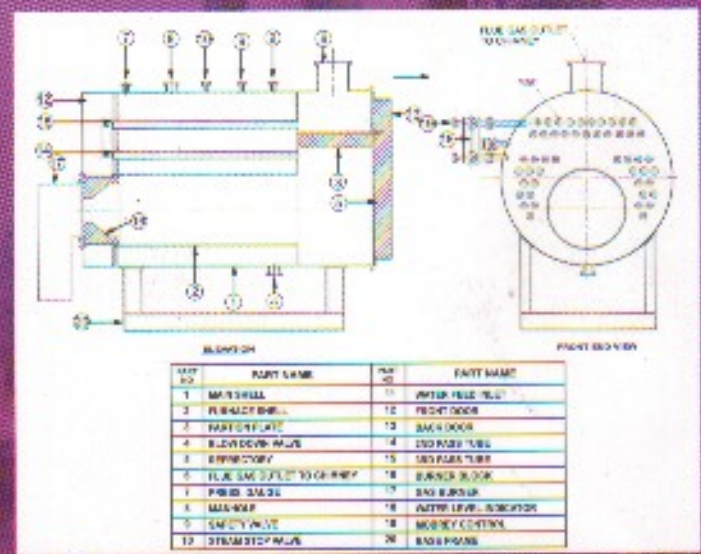
- 1) Material Identification & inspection
- 2) inspection of each component after completing
- 3) welding and drilling
- 4) Assembly of Boiler
- 5) Hydraulic Test of Boiler



SKETCH VIEW OF SOLID FUEL FIRED WATER WALL CUM SMOKE TUBE SMALL INDUSTRIAL (SIB) BOILER

OPERATING SAFETY

- Rugged sturdy design
- Two Nos. Safety valve for released of high steam press.
- Pressure switch for cut out of boiler at high steam press.
- Low water lock out Boiler
- Automatic water level controller for pump on/off control.
- Alarm for low water level in Boiler
- Fully Automatic Operation For Oil/gas Fired Boiler



SKETCH VIEW OF OIL/GAS FUEL FIRED FULLY AUTOMATIC SMOKE TUBE TYPE PACKAGE HORIZONTAL SMALL INDUSTRIAL STEAM BOILER.

* Note : Design is under constant improvement and is subject to change without notice




ENERGY PROCESS EQUIPMENTS

Works & Office : Plot : No.29 G.I.D.C. N.H. No. 8, POR-Ramangamdi, Ta.Dist: Vadodara-391243. (Guj)
Ph.No.: (0265) 2830375, 2830975, 2831475, 2831414 Tele Fax No.: (0265) 2830975, (R) (0265) 2645051
E-mail : info@energy-boilers.com,energyboiler@satyam.net.in
Visit us : www.energy-boilers.com

WHY SHOULD SELECT THE SMALL INDUSTRIAL BOILER ?

** Some highlights & advantages of Small Industrial Steam Boiler, which can be helpful to you for selecting Small Industrial Boiler (SIB) :

- 
- A. Small Industrial Boiler Design, Manufacturing & Inspection is as per Indian Boiler Regulation Act - Chapter XIV & to provide with all papers like Boiler Certificate (Form XVII)
 - B. No require IBR Boiler Operators. Only X pass or Equivalent can operate this Boiler.
 - C. Normal Yearly Inspection Fee
 - D. SIB Boiler design is smoke tube horizontal type, so, no more maintenance required compare to Coil type Boiler.
 - E. Very easy for cleaning from Water/Steam side & also from Smoke tubes side.
 - F. More Dryness fraction of steam against coil type boiler.
 - G. Giving constant steam pressure & In coil type Boiler may be chaces for uneven steam pressure.
 - H. In case of coil type boiler negligence in water treatment will chock the coil and there will be no Steam generation. This boiler will generate the steam & no chocking problems. However, coil type boiler is not advisable.
 - I. Enthalpy value is more than same capacity of coil type boiler.
 - J. If require, you can run this boiler in 2/3rd capacity load at same Efficiency & In coil type boiler, this is not possible.
 - K. If require in future, earning resale value is good compare to Coil type boiler because this is certified & registered Boiler.



ENERGY PROCESS EQUIPMENTS

Works & Office : Plot : No.29 G.I.D.C. N.H. No. 8, POR-Ramangamdi, Ta.Dist: Vadodara-391243. (Guj)
 Ph.No.: (0265) 2830375, 2830975, 2831475, 2831414 Tele Fax No.: (0265) 2830975, (R) (0265) 2645051
 E-mail : info@energy-boilers.com,energyboiler@satyam.net.in
 Visit us : www.energy-boilers.com



SOLID FUEL FIRED HR STEAM BOILER

OIL GAS FIRED HR BOILER

SMOKE TUBE TYPE, HORIZONTAL SOLID FUEL FIRED BOILER

SOLID FUEL FIRED WATER WALL SMOKE CUM WATER TUBE BOILER

SMOKE TUBE TYPE HORIZONTAL OIL GAS FIRED BOILER

DIL FIRED THERMIC FLUID HEATING SYSTEM



DUPLEX OIL FILTER



SOLID FUEL FIRED EXTERNAL FIRING HOT AIR GENERATOR



OIL FIRED HR STEAM BOILER



SOLID FUEL FIRED VERTICAL THERMO FLUID HEATER



SOLID FUEL FIRED HORIZONTAL THERMO FLUID HEATER



MARKETED & MANUFACTURED BY



ENERGY PROCESS EQUIPMENTS

Works & Office : Plot : No.29 G.I.D.C. N.H. No. 8, POR-Ramangamdi, Ta.Dist: Vadodara-391243. (Guj)
 Ph.No.: (0265) 2830375, 2830975, 2831475, 2831414 Tele Fax No.: (0265) 2830975, (R) (0265) 2645051
 E-mail : info@energy-boilers.com,energyboiler@satyam.net.in
 Visit us : www.energy-boilers.com

Visit us : www.energy-boilers.com